

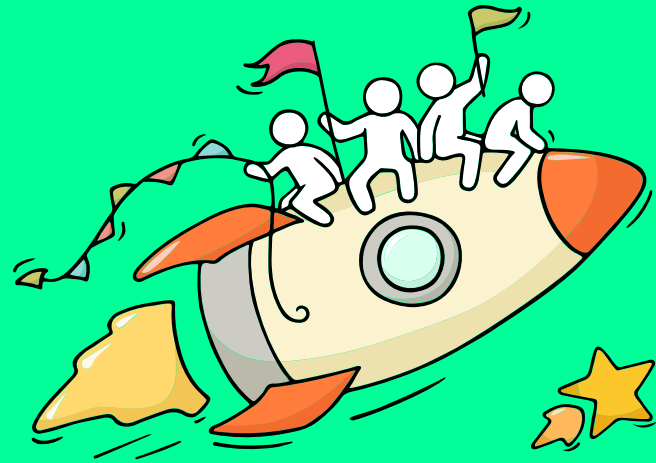
Welcome Back!

Briefing Slides for Release of N-Level Results



Dear students,

As we gather here today, let us all celebrate our efforts!

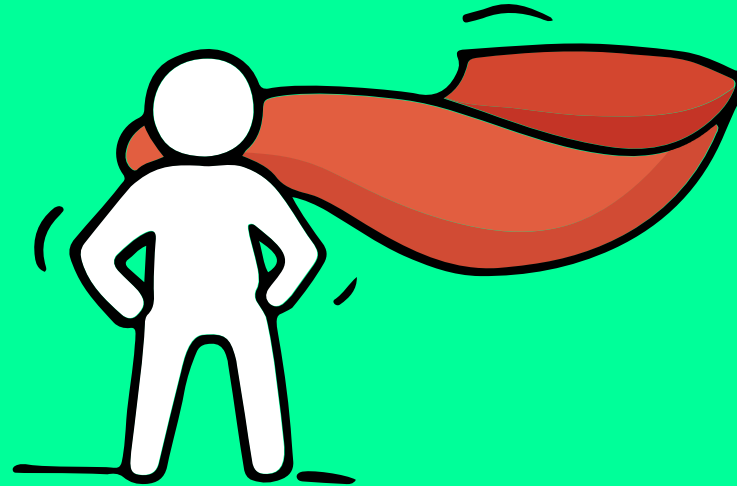


Finally, we are going to get our results!



Think about your opportunities

*Are we all going to
be okay?*



Remember that **everyone's learning journey is different**
but **we can each have a fulfilling outcome!**

No matter the circumstances, there is always a way forward.

Stop

- Calm yourself down. Take a few deep breaths.

Think

- Think through the different options that are available for you. Keep things in perspective.
- Remember that the N-Level is one part of your life journey and not the destination.

Do

- Approach a trusted adult and seek his/her help. Have a conversation with this person about what would be best for you.
- Make a decision and take action based on your options.

When you receive your results, you may experience a range of emotions.

Managing these emotions well will allow you to stay calm and make rational decisions.

Keep a lookout for some of these signs in your peers or yourself.

How can we support one another?



D
I
S
T
R
E
S
S

Deliberately avoiding others

Increased irritability, restlessness, agitation, stress and anxiety

Sending or posting moody messages on social media

Talking about death or dying

Reacting differently or gradually losing interest in things they used to like

Eating more than usual or having a much reduced appetite

Sleep pattern changes with difficulty falling asleep or oversleeping

Slowing down of energy levels

If you notice any of these signs in yourself or your friends, **have a chat with your school counsellor or teacher**

Or contact SOS 24-hour hotline at **1800-221-4444**

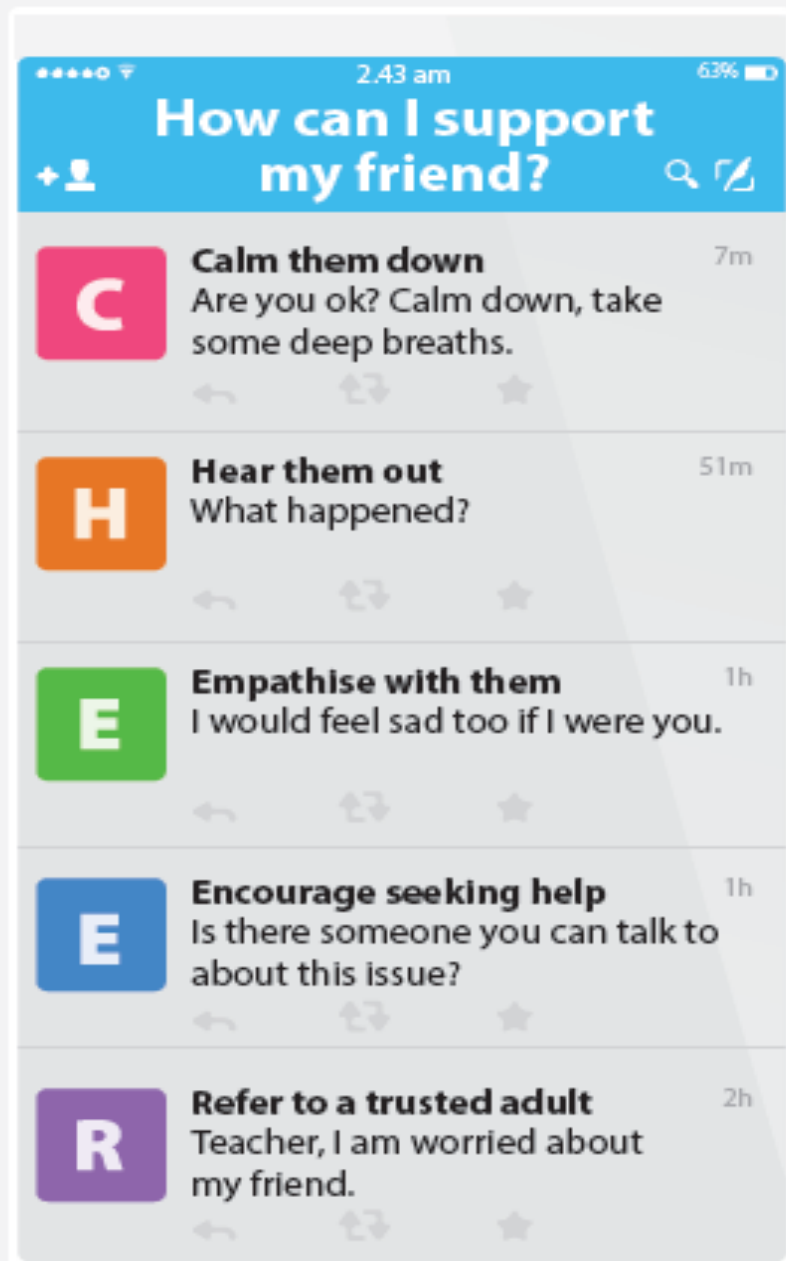


Supporting Your Friend

We may each experience different emotions upon receiving the results. You can share your friends' joy by congratulating them or give words of encouragement to friends who may be disappointed with their results.



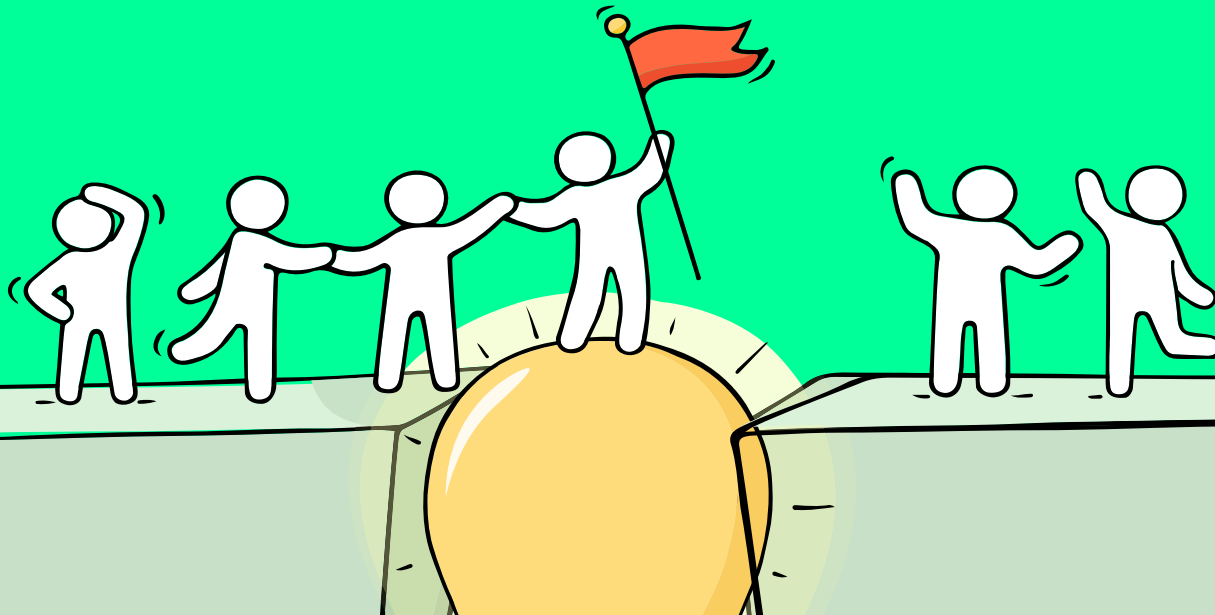
Keep a lookout for your friends in distress. You can support them in the following ways:



Reaching out for help is a sign of strength, not weakness.

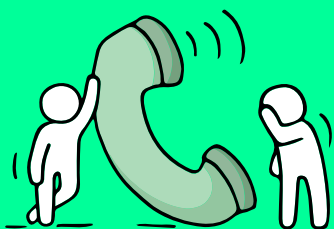
Is there someone we can speak with?

If you have any concerns or are not coping, do reach out to someone you trust and speak with them. It could be a parent/guardian, teacher, School Counsellor or a friend that you can talk to.



Help is readily available for you.

There are other hotlines and chats available if you are more comfortable seeking help using these platforms.



SOS

SOS provides round the clock emotional support for those in distress, thinking of suicide or affected by suicide. This service is manned by trained volunteers.

Call: **1-767 or 1800-221-444**
(24-hour helpline)

There are also alternative avenues for emotional support through email and text messaging.

Email: **pat@sos.org.sg**
(Response within 48 hours)

SOS Care Text: **www.sos.org.sg**
(6pm – 6am on Mon to Thu and 6pm to 11:59pm on Fri)

Community Health Assessment Team (CHAT)

If you experience prolonged difficulties, CHAT provides personalised and confidential mental health checks and face-to-face consultation for youth aged 16 to 30. To speak with a youth support worker, you can:

Visit: **CHAT Hub at *SCAPE, #05-05** or
Call: **6493 6500/ 6501** or
Email: **CHAT@mentalhealth.sg**

Help is readily available for you.

There are other hotlines and chats available if you are more comfortable seeking help using these platforms.

eC2

eC2 is an e-Counselling Centre where you can talk to a trained counsellor about the issues you are facing, right where you are.

Youths may chat with a counsellor online at:
www.ec2.sg

Monday – Friday
(Excluding Public Holidays): 10am – 12pm & 2pm – 5pm

TOUCHline

TOUCHline is a helpline to provide youths with emotional support and practical advice.

Call: **1800 3772252**

Monday – Friday
(Excluding Public Holidays): 9am – 6pm

mindline.sg

mindline.sg is an online platform that provides tools, tips and resources to help you manage your health and well-being. Explore and find out how you can improve your mental well-being and support your friends too.

Find out more:
www.mindline.sg



Help is readily available for you.

Reach out to an ECG Counsellor!

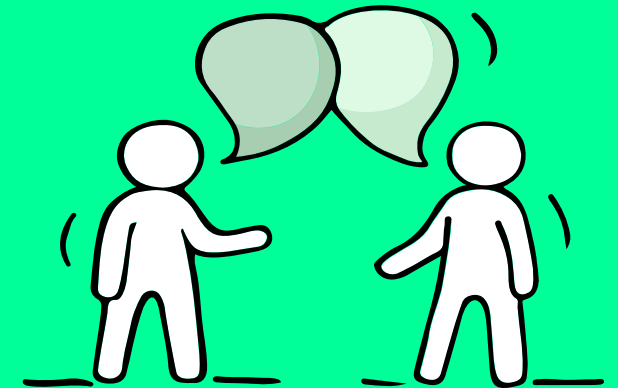
Make an appointment to speak with your ECG Counsellor in school.

Make an online or phone counselling appointment with the ECG Centre @ MOE (Grange Road) through

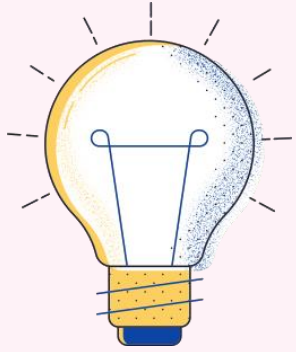
<https://go.gov.sg/moe-ecg-centre>



*Is there
someone we
can speak with?*



Thinking About Your Next Step?



Who am I?

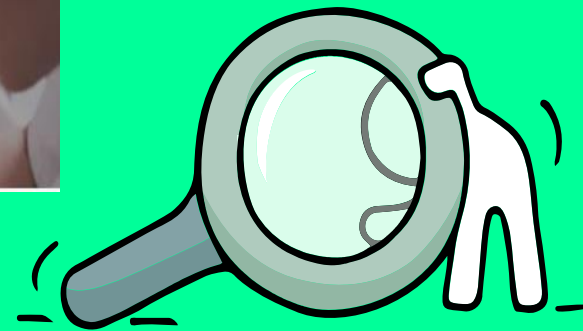
Where do I want to go?

How do I get there?

Resources to help you make informed decisions



Where can we find more information?

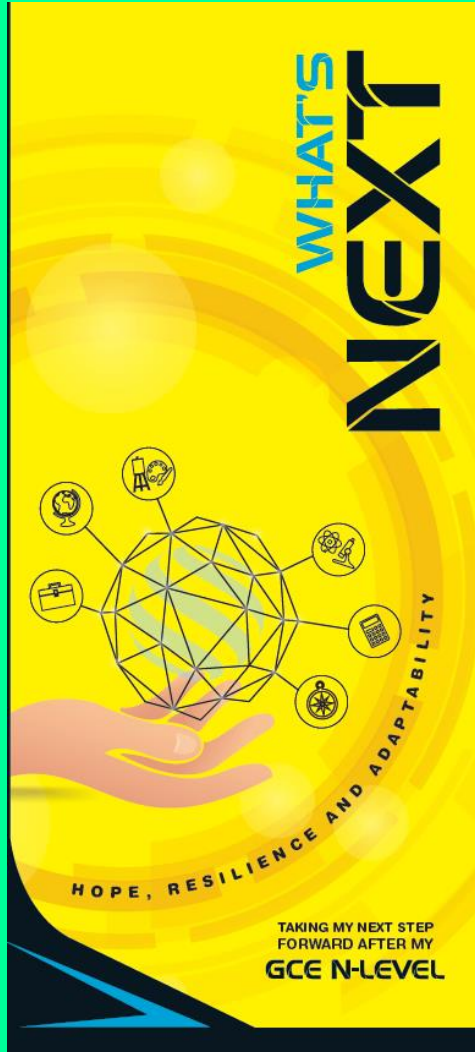


<https://go.gov.sg/mySFsec>

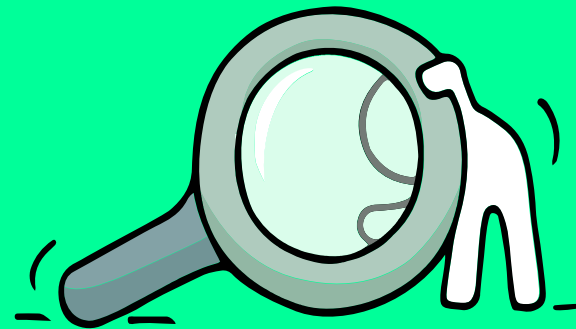


<https://go.gov.sg/mySFsec>

Resources to help you make informed decisions



Where can we find more information?



<https://go.gov.sg/whats-next-nlevel>



<https://go.gov.sg/whats-next-nlevel>

Post-Secondary Education

Learn more about the admissions exercises and programmes

<https://moe.gov.sg/post-secondary/admissions>



Learn more about the post-secondary education institutions

<https://moe.gov.sg/post-secondary/overview>





Unsure of what's next?

Explore different jobs and industries with **On My Way (OMW)**. Find out if your career goal and educational pathway match your interests, values and ambitions.

Get key info on **jobs and industries** that you aspire to enter, with quick FAQs on **how to get there!**



Peek into a **day in the life of professionals** from various fields with our video series.

Connect with schooling seniors, go on learning journeys, or tune in to our industry panels, we've got programmes planned from Nov 2022 to Feb 2023

Go to <https://go.gov.sg/omw-moerrp2023> and let's get you on your way!



<https://go.gov.sg/omw-moerrp2023>

KNOW IT ALL COPY URL TO SHARE

INVESTMENT BANKER

Investment Bankers sell securities and provide strategic advice to their clients. They advise clients on raising funds from the equity/debt capital markets and merger and acquisitions (M&A).

RESPONSIBILITIES

- Advise corporate clients on product offerings, private equity transactions, mergers and acquisitions, and valuations.
- Determine the **best strategy** and place to **raise debt or equity capital**.
- Prepare necessary documents to **protect the company and investor**.
- Ensure all **government regulations have been adhered to**.
- Perform financial modelling using valuation methods.

SKILLS NEEDED

<p>HARD SKILLS</p> <ul style="list-style-type: none"> Financial Modelling (e.g. DCF, Public Comps, M&A Comps) Data Analytics Strong Mathematical and Numerical Skills 	<p>SOFT SKILLS</p> <ul style="list-style-type: none"> Influencing and negotiation skills Innovative Problem Solving Customer Orientation Communication
---	---



School-Based Support

Domain	Remarks
Educational Career Guidance	<p>Please contact Mr Tan (ECG Counsellor) via:</p> <ul style="list-style-type: none">• Email: tan_kok_leong_b@schools.gov.sg; or• Telegram: https://t.me/ECGC_Mr_Tan; or• Schedule an appointment with him at https://go.gov.sg/ecg-service-request
Social-Emotional	<ul style="list-style-type: none">• Please contact the school counselling team at https://tinyurl.com/SSScounselling
ICT (i.e. use of school device for application)	<ul style="list-style-type: none">• 19 Dec, please report to ICT personnel at the IT lab 2 (Level 3) from 2.30 pm to 4pm• 20 Dec to 22 Dec, IT lab is available from 9am to 4pm. Must inform FTs, prior to coming to school in school attire.

Interpreting your result slip

- Promoted
- Repeat
- ITE

Promoted

- Direct Entry Scheme to Polytechnic Programme (DPP) or
- Polytechnic Foundation Programme (PFP) or
- NAFA Foundation Programme (NFP) or
- ITE or
- 5NA to pursue 2023 GCE O-Level Examination [Note: Please submit the online form at <https://for.edu.sg/applysss5na> by **22 Dec (Thursday), 5pm**]



Applying for PFP/DPP

- All PFP-bound students are required to:
 - attend Sec 5N(A) till 27 Jan 2023 (Friday)
 - apply for PFP in Jan 2023 upon release of GCE O-level results
- Students who are interested to apply for DPP only:
 - Apply from 19 Dec to 22 Dec 2022
 - If DPP application is successful, there is no need to return to Sec 5N(A)

Can students apply for both the PFP & DPP at the same time?

- Yes. However, if the student is offered a place in both the PFP and DPP, **he/she may only accept one course offer.** Students who accept both offers will have both offers voided.
- If the student has already accepted his/her DPP offer by 4 Jan 2023, the school will contact him/her if he/she is eligible for PFP and the collection of the PFP eligibility form, after the release of the GCE O-Level results. If the student decides to apply for and accepts his/her PFP offer in January, he/she will need to apply for withdrawal from the DPP course. **Applicant can apply for refund of his/her DPP enrolment fees, subject to ITE's approval.**

Can students apply for both the PFP & DPP at the same time?

One option for Secondary 4 Normal (Academic) students who are interested in both the PFP and DPP is to **first progress to Secondary 5** and **then apply for both the PFP and DPP** upon release of the GCE O-Level examination results in January.

Repeat

- Progress to ITE or
- Repeat 4NA in 2023
- Note 1: To find **Mr Christopher Tan at the hall by today, 4pm**
- Note 2: While waiting for the outcome of the application, students are strongly encouraged to apply for ITE courses first.

ITE

- No repeat of 4NA
- To complete the application process for ITE admission by **22 Dec (Thursday) 5pm.**

ITE will offer 11 3-year *Higher Nitec* courses in Academic Year (AY) 2023 for eligible N(A) and N(T) students: **NEW!**

- *Higher Nitec* in Accounting
- *Higher Nitec* in Sport Management
- *Higher Nitec* in AI Applications
- *Higher Nitec* in Business Information Systems
- *Higher Nitec* in Cyber & Network Security
- *Higher Nitec* in Data Engineering
- *Higher Nitec* in Electronics Engineering
- *Higher Nitec* in Immersive Applications & Game
- *Higher Nitec* in IT Systems & Networks
- *Higher Nitec* in IT Applications Development
- *Higher Nitec* in Security System Integration

Can I apply for 2-year Higher Nitec courses under the DPP and Nitec or 3-year Higher Nitec courses under the Joint Intake Exercise at the same time?

Yes, students can submit separate applications to 2-year Higher Nitec courses under the DPP and Nitec or 3-year Higher Nitec courses under the Joint Intake Exercise. However, once an applicant is successful for a 2-year Higher Nitec course, he/she will not be offered a Nitec or 3-year Higher Nitec course.

Important Information

You will be receiving the following items from your Form Teachers:

- Results Slip
- Certificate
- Form N
- ITE Admission Booklet
- Higher Nitec brochure
- Summary of Post-N Level Pathways
- Post-Secondary Education Guide

Important Information

- Check your particulars (Name/IC No/ Subjects) on the results slip and certificate
- Check your eligibility for the various courses in Form N
- Approach teachers/parents/counsellors for advice

ICT Support: JIE Application

- Venue: IT Lab 2 (Level 3)
- Opening hours :
 - **19 Dec 2022 (2.30pm to 4pm)**
- From 20 to 22 Dec, please inform your FTs, prior to coming to the school, if you need ICT support
 - Attire: Half uniform
- Once you have submitted your JIE application, please inform your Form Teacher

Reminders

- Students going to Sec 5NA in 2023 please submit the online form by 22 Dec (Thu) 5pm
- Repeating Sec 4NA in 2023 to see Mr Christopher Tan at the hall by today, 4pm
- DPP and JIE registration must be completed by 22 Dec (Thu) 5pm
- School Counsellors and teachers are around if you need someone to talk to



For Returning Sec 5

- The printed copies of 2023 Booklist for Sec 5NA are available in GO. PDF copy available on our [school website](#).
- Students who are returning to SSS to continue their studies in 2023 may purchase their books from school bookshop on the day of results release on 19 Dec 2022 or when school re-opens. They are required to be properly attired (in half-school uniform with black shoes and socks). Students who are not properly-attired will be refused entry.
- For uniforms, they may purchase online at www.intrenduniforms.com or directly at vendor's retail store at Kaki Bukit Road (see details below) or when school re-opens.

In-Trend Uniforms

1 Kaki Bukit Road 1, #01-30/31

Enterprise One

Singapore 415 934

For Returning Sec 5

- Students who need to apply for 2023 MOE FAS may pick up a copy of the application form from GO or download a PDF copy from MOE's website or submit application online via <https://go.gov.sg/moe-efas>. They **must submit** their MOE FAS application **latest by Friday 6 Jan 2023**, if they wish to be considered for financial assistance under MOE FAS for the **full year** from January to December 2023.
- **No reimbursement will be given** if you have made payment for any of the MOE FAS benefits (e.g. books and uniforms) **prior to receiving FAS approval**.

Key Dates for Jan 2023 Intake Exercise (Full-time Nitec Courses)

Key Activity	Period for 2-Year and 3-Year Nitec Courses, and 3-Year Higher Nitec courses	Remarks
1st Phase (Main Phase)		
Application	19 Dec 2022 (2.30pm) to 22 Dec 2022 (5pm)	Apply through the Internet at https://www.ite.edu.sg with NRIC / FIN and Date of Birth. You may also apply using SingPass.
Release of Results	30 Dec 2022 at 9am	Check results at https://istudent.ite.edu.sg with web ID and password
Acceptance of Course Offer Period	30 Dec 2022 to 4 Jan 2023	Accept course offer at https://istudent.ite.edu.sg with web ID and password
2nd Phase (Late Application/Appeal Phase)		
Application	30 Dec 2022 to 4 Jan 2023	Apply through the Internet at https://istudent.ite.edu.sg with NRIC / FIN and Date of Birth. You may also apply using SingPass.
Release of Results	11 Jan 2023 at 9am	Check results at https://istudent.ite.edu.sg with web ID and password
Acceptance of Course Offer Period	11 Jan 2023 to 13 Jan 2023	Accept course offer at https://istudent.ite.edu.sg with web ID and password
3rd Phase (Final Top-up Phase)		
Application	1 st Top-up Phase Application - 11 Jan to 19 Jan 2023 2 nd Top-up Phase Application - 27 Jan to 8 Feb 2023	Apply through the Internet at https://istudent.ite.edu.sg with NRIC / FIN and Date of Birth. You may also apply using SingPass.
Release of Results	1 st Top-up Phase - 16 Jan to 27 Jan 2023 2 nd Top-up Phase - 27 Jan to 14 Feb 2023	Check results at https://istudent.ite.edu.sg with web ID and password
Acceptance of Course Offer Period	1 st Top-up Phase - 16 Jan to 27 Jan 2023 2 nd Top-up Phase - 27 Jan to 14 Feb 2023	Accept course offer at https://istudent.ite.edu.sg with web ID and password

Jan 2023 Intake Term Commencement Date: **9 Jan 2023**

Information For Students on Key Dates for Jan 2023 intake

1. All N(A)*/N(T) school leavers are encouraged to put in an application during the **1st Phase (Main Phase)** between **19 Dec 2022 (2.30pm) to 22 Dec 2022 (5pm)**. Application results for the 1st Phase will be released on **30 Dec 2022 at 9am**.
2. If you wish to appeal, please accept the course offered **before** applying in the **2nd Phase (Late Application/Appeal Phase)** between **30 Dec 2022 to 4 Jan 2023**. The application results for the 2nd Phase will be known on **11 Jan 2023 at 9am**.
3. Unsuccessful applicants can appeal under the **3rd Phase (Final Top-up Phase)** between **11 Jan to 19 Jan 2023 and 27 Jan to 8 Feb 2023** for courses with vacancies. The application results for the 3rd Phase will be known between **16 Jan to 27 Jan 2023** and **27 Jan to 14 Feb 2023**.

*N(A) students progressing to ITE

For further enquiries, N-Level school leavers can contact
ITE Hotline: 1800-2222-111

Key Pointers for Students on ITE's Joint Intake Exercise (JIE) for Admission to Nitec Courses

ALL N(T) students and N(A) students (who are not progressing to 5N(A) or repeating 4N(A)) are eligible for JIE.

Keen competition for Nitec and Higher Nitec courses, so use all 12 choices wisely!

Participation in Main Phase is key to secure a place in ITE!

If you are keen in the work & learn option, you may consider applying for the ITE Traineeship programme. Do apply in the Main Phase to avoid missing a place in ITE!

If you are unsuccessful in EAE, make sure you apply in Main Phase to avoid missing a place!

If you have received an additional letter, then you are eligible for the 3-year Nitec Programme (eNFP).

If you are eligible for eNFP, make sure you apply for the 2-year Nitec and 3-year Higher Nitec first before applying for eNFP!




The eNFP helps to build the necessary literacy and numeracy foundations that will enable you to successfully complete your Nitec course!

If you are counter-offered a course, accept it first before appealing for another course you may be more interested in!

Online Application for

2-Year Nitec and 3-Year
Higher Nitec Courses

3-Year Nitec Course with eNFP
(for N(T) courses with 0, 1 pass)

1. Go to https://www.ite.edu.sg .	
2. Click  icon.	
3. Under JIE 'N', click  icon to link to the application website	Under JIE 'E', click  icon to link to the application website
4. At the application website: a) Enter NRIC / FIN and Date of Birth to start application. You may also apply using SingPass. b) Upon completion of application, applicants will receive their web ID and password.	

Checking of Posting Results/Accept Course Offer

2-Year Nitec and 3-Year
Higher Nitec Courses

3-Year Nitec Course with eNFP
(for N(T) courses with 0, 1 pass)

1. Go to <https://istudent.ite.edu.sg>.
2. Enter **web ID** and password.
3. Click '**Self-Service**' followed by '**Student Admission**' followed by '**View Application Results**' to view the application results and to accept course offer.

The above steps applies to all phases (refer to Slide 9 for dates).
For more details, please refer to ITE Admission Booklet.

Additional Information For Students

Should you require further advice or assistance in your applications or future plans, please contact your teachers and ECG Counsellor.

For further inquiries, you may refer to the following hotlines and links for more information and advice on further education:

Institute of Technical Education (ITE)	
ITE Hotline (for ITE admissions and courses)	1800 2222 111 training@ite.edu.sg
Education and Career Guidance (ECG)	
ECG Centre @ MOE	<u>6831 1420</u> MOE ECG@moe.gov.sg e-Appointment: https://go.gov.sg/moe-ecg-centre

Additional Information For Students

The information listed in the table below will help you to make an informed decision on which choice of courses you could consider applying at ITE.

S/N	Information	Attachment/Link
1	ITE Factsheet 2022	 2022 Factsheet
2	ITE Course Booklet 2023	https://www.ite.edu.sg/docs/default-source/full-time-courses-doc/ite-course-booklet-2023
3	ITE Traineeship Course Booklet 2023	https://www.ite.edu.sg/docs/default-source/traineeship/ite-traineeship-e-booklet_2023.pdf
4	Information on Progression Opportunities (From <i>Nitec</i> Courses to <i>Higher Nitec</i> and Technical Diploma Courses)	https://www.ite.edu.sg/admissions/full-time-courses/nitec/progression-opportunities
5	Information on Graduate Employment Survey	https://www.ite.edu.sg/admissions/graduate-employment-survey

The N-Level is not
the destination.

It is part of your
education journey.

